



# HAZELWOOD

## INTEGRATED COLLEGE

*Empowering Minds. Celebrating Differences.  
Inspiring Growth.*

# PROSPECTUS 2026

028 9077 4202 | [info@hazelwood.belfast.ni.sch.uk](mailto:info@hazelwood.belfast.ni.sch.uk)  
[www.hazelwoodcollege.co.uk](http://www.hazelwoodcollege.co.uk)





# INTEGRATED EDUCATION



## Investing in Your Child's Future

Since its establishment in 1985, Hazelwood has been at the forefront of Integrated Education.

We were founded on the belief that a diverse, shared environment is not just socially responsible, but academically superior. This commitment is central to our identity: we proactively ensure that pupils from Protestant, Catholic, other faiths, and none, learn and grow together.

The integrated school environment creates a dynamic learning culture that moves beyond simple tolerance, fostering deep mutual respect and genuine understanding. When you choose Hazelwood, you are choosing a school committed to delivering educational excellence through the power of inclusion.

## The Integrated Advantage

- 1. Building a Shared Future, Daily**  
Active and intentional integration is the foundation of our ethos, ensuring your child learns to value and collaborate with peers from different traditions, directly contributing to a more cohesive society.
- 2. Valuing Every Cultural Identity**  
Our curriculum and school life celebrate the traditions and beliefs of all students. Your child is supported to be proud of their own identity while engaging with and understanding the identities of others, fostering a unique depth of cultural intelligence.
- 3. Education for Peace and Leadership**  
The integrated environment is an unparalleled training ground for conflict resolution and leadership. Students develop a sophisticated understanding of difference and gain essential communication skills, preparing them to lead their communities and become thoughtful, active citizens in a post-conflict society.





# OUR GUIDING PRINCIPLES

Empowering Minds. Celebrating Differences. Inspiring Growth.



## Our Vision: The Future We Are Building

At Hazelwood Integrated College, our vision is to be an inclusive and supportive school, where everyone is valued, motivated, and empowered to succeed.

This isn't just a statement; it's the daily commitment that shapes every lesson, every interaction, and every decision we make. We believe that true success comes when an individual feels safe, supported, and confident enough to pursue their biggest ambitions. Your child's potential is limitless, and we are here to help unlock it.

## Our Mission: Committed to GROW

At Hazelwood Integrated College, we are committed to nurturing a community where every individual can GROW.

We celebrate **Gratitude** by recognising the value in others, foster **Resilience** by encouraging persistence and determination, provide **Opportunities** that are inclusive for all, and spark **Wonder** by inspiring curiosity and a love of learning. Through this, we aim to create an environment where everyone is valued, motivated, and empowered to achieve their fullest potential.

This acronym is the heart of our school life, defining how we teach, how we learn, and how we treat one another.

G

**Gratitude:** We recognise the value in others and appreciate the support and opportunities we are given.

R

**Resilience:** We encourage persistence and determination, helping pupils develop the strength to bounce back and learn from challenges.

O

**Opportunities:** We provide a wide range of academic, creative, and extracurricular opportunities that are inclusive for all.

W

**Wonder:** We inspire curiosity and a lifelong love of learning, sparking the natural drive to question, explore, and create.



# THE CORE OF SCHOOL LIFE



## The GROW Values:

The GROW values are not just words; they are the behaviours we celebrate and the skills we develop across whole school life.

Value	What It Means to Our Pupils	How We See It in School Life
G - Gratitude	Appreciating what we have and valuing others.	<b>Respectful, Inclusive Community:</b> We foster a climate of mutual respect where all differences are celebrated. We promote courtesy daily and encourage pupils to actively contribute to the well-being of the wider community through service and charity.
R - Resilience	Bouncing back from challenges with strength and determination.	<b>Positive Learning Culture:</b> We teach pupils to view mistakes as valuable steps in the learning process. Our support systems focus on developing a Growth Mindset, empowering students with the emotional and academic tools needed to persist and overcome setbacks.
O - Opportunities	Embracing every chance to learn, lead, and succeed.	<b>Broad Range of Experience:</b> Every student is encouraged to explore and develop their talents through a diverse range of extracurricular activities. We provide multiple pathways for leadership and responsibility to build confidence and prepare students for life beyond Hazelwood.
W - Wonder	Staying curious and inspired to have a love of learning.	<b>Engaging, Dynamic Curriculum:</b> Lessons are designed to be hands-on, investigative, and inspiring. We champion critical thinking and intellectual curiosity, encouraging pupils to ask deep questions and explore the world through debate, creative projects, and meaningful cultural trips.

# ACADEMIC EXCELLENCE AT HAZELWOOD COLLEGE



**Hazelwood College is committed to fostering academic excellence within an inclusive and forward-thinking environment. Our broad and balanced curriculum, complemented by a rich extra-curricular programme, empowers students to thrive both personally and academically. We nurture a culture of lifelong learning, encouraging each student to fulfil their potential, build confidence, and develop self-esteem.**

Through active engagement in their education, students learn to set realistic goals, reflect on their progress, and take responsibility for their learning journey.

We promote high expectations and a strong work ethic, helping students to identify their strengths and areas for growth across all subjects.

Our ethos supports personal achievement, respect, and the development of essential skills for future careers.

At Hazelwood College, academic excellence is not just a goal—it is a shared commitment to preparing students for success in an ever-evolving world.



## OUR CURRICULUM



### KEY STAGE 3

Art	Home Economics	Physical Education
Drama	Information Technology	Religious Education
English	Learning for Life & Work	Science
Geography	Maths	Spanish
History	Music	Technology & Design

### KEY STAGE 4

#### Core Subjects

English Language	Personal & Social Development	Religious Education
Mathematics	Physical Education	Science

#### Optional Subjects

Art & Design	Early Years	King's Trust Achieve XL
Business Studies	Engineering	Media Studies
Carpentry & Joinery	English Literature	Moving Image Arts
Child Development	Health & Social Care	Music
Construction	History	Patisserie & Baking
Digital Technology	Hospitality & Catering	Photography
Drama	Information Technology	Polish
Public Services	Skills for Business	Government & Politics
Spanish	Sports Studies	Travel & Tourism

### KEY STAGE 5

Art & Design	Health & Life Science	Moving Image Arts
Business Studies	Health & Social Care	Photography
Careers & Enrichment	History	Public Services
Child Development	Hospitality & Catering	Sociology
Drama	Information Technology	Spanish
English Literature	Mathematics	Sports Studies
Environmental Technology	Media Studies	Travel & Tourism



## PASTORAL EXCELLENCE

At Hazelwood Integrated College, we believe that exceptional pastoral care is the foundation for academic and personal success. Our students thrive in a safe, supportive, and nurturing environment, which is integral to our integrated ethos.

Our comprehensive pastoral system ensures every young person is known, valued, and encouraged. From our dedicated Form Teachers and Heads of Year to our strong student support team, we provide a network of care that addresses the academic, emotional, and social needs of each individual. We foster resilience, celebrate diversity, and promote positive mental health, ensuring our students leave us as confident, compassionate, and well-rounded citizens ready for the world.

We work in close partnership with parents/carers, recognising the vital role home and school play together. This shared commitment creates a true family atmosphere where all members of our integrated community—students of all backgrounds and beliefs—feel secure, supported, and ready to learn. At Hazelwood Integrated College, your child's well-being is always our top priority.



**HAZELWOOD**  
INTEGRATED COLLEGE

# WHEEL OF CARE

**Our Designated  
Child Protection Officers**

**Your Parents/Carers**

**Student Services Officer**

**An Adult in School**

**Classroom  
Assistants**

**Learning  
Mentors**



**Your Friends**

**The School  
Counsellors**

**Student Council Leader**

**School Social Worker**

**The Study Centres  
or The Library**

**School Health Officer**

**Youth Support**

**Careers Department**





## SPORTING EXCELLENCE

**A range of sporting teams at the College compete all year round in a variety of activities where students have the opportunity to visit other schools and outside venues to experience competition at various levels.**

### **Sports include:**

- Football
- Rugby
- Basketball
- Gaelic
- Netball
- Trampolining
- Handball
- Cross-country
- Athletics
- Table tennis

Our indoor facilities include a three-court sports hall for badminton, basketball, netball, indoor football and trampolining etc. The College gymnasium is utilised for gymnastics, dance and fitness. Outdoor facilities include an all-weather pitch which is used for football, Gaelic, rugby, athletics and rounders.







# EXTRA-CURRICULAR ACTIVITIES





## ENRICHING OPPORTUNITIES

**Learning beyond the classroom is an important aspect of our College. At Hazelwood we provide a variety of activities to:**

- extend students' learning through our extra-curricular programme
- improve teamwork
- enable students to develop
- broaden personal and social skills alongside their academic achievements
- inspire students
- build on their talents
- further enhance the skills and aspirations of our students





# A WORD FROM OUR YEAR 8'S



I am so glad I came to Hazelwood College because I get so much additional support that I need and there are so many kind staff to help and guide me.  
**(Fraser, 8EH)**

Hazelwood is a great school because no matter what you are going through, the teachers and teaching assistants are always there for you.  
**(Annie, 8MB)**

I love Hazelwood because it is an integrated school everyone respects your feelings and your choices.  
**(Amira, 8JM)**

I love Hazelwood because you can be yourself here and you don't have to fit in with everyone else. The teachers are also really supportive and kind.  
**(Edyn, 8MO)**

I love coming to Hazelwood and would recommend the school because the staff are so kind and helpful. No-one is ever too busy to care.  
**(Tehil, 8MB)**



I am glad I chose Hazelwood because the teachers make sure every subject is interesting, and we learn so many new things every day. I love school now!  
**(Amelia, 8JM)**

I am so glad I chose Hazelwood because I have lots of opportunities to make new friends and learn new and exciting subjects.  
**(Maiya, 8JM)**

I love Hazelwood because I love getting to play football with my friends at lunchtime and there are so many clubs and societies for us to join on the rainy days too!  
**(Cal, 8MO)**

I would recommend coming to Hazelwood because the education is great, and the teachers listen to all your thoughts and ideas- I feel heard here.  
**(Samantha, 8JM)**

I am glad I chose Hazelwood because it's an integrated school so I can make friends and meet people from different countries and backgrounds.  
**(Darragh, 8JM)**

I think you should come to Hazelwood because all of the staff will help you succeed. The teachers are so welcoming and when I started, I very quickly felt like I had been here for years. I know I belong here, and you will too.  
**(Brooke, 8MB)**





## THE HAZELWOOD POST-16 EXPERIENCE: *Your Future Starts Here*

**Our Post-16 provision at Hazelwood Integrated College offers a supportive and aspirational environment for academic excellence and future planning. We consistently deliver strong A-Level results, with a broad curriculum that includes traditional academic subjects and high-performing applied courses, enabling our students to compete successfully for their chosen pathways.**

Crucially, this academic success is underpinned by our pastoral care excellence. Our Post-16 students benefit from a dedicated Head of Post 16 and tutor team who offer specialised guidance, promoting personal development, resilience, and wellbeing.

We encourage leadership and community involvement, fostering mature, responsible young adults.

Future planning is at the core of our approach. Our expert careers guidance is embedded throughout Year 13 and 14, providing one-to-one advice, university application support (UCAS), and opportunities for work experience and apprenticeship guidance. This holistic strategy ensures that every student, regardless of their aspirations—whether Higher Education at top universities or competitive employment—is fully equipped to take the next significant step in their journey. Join us and make your future a success.

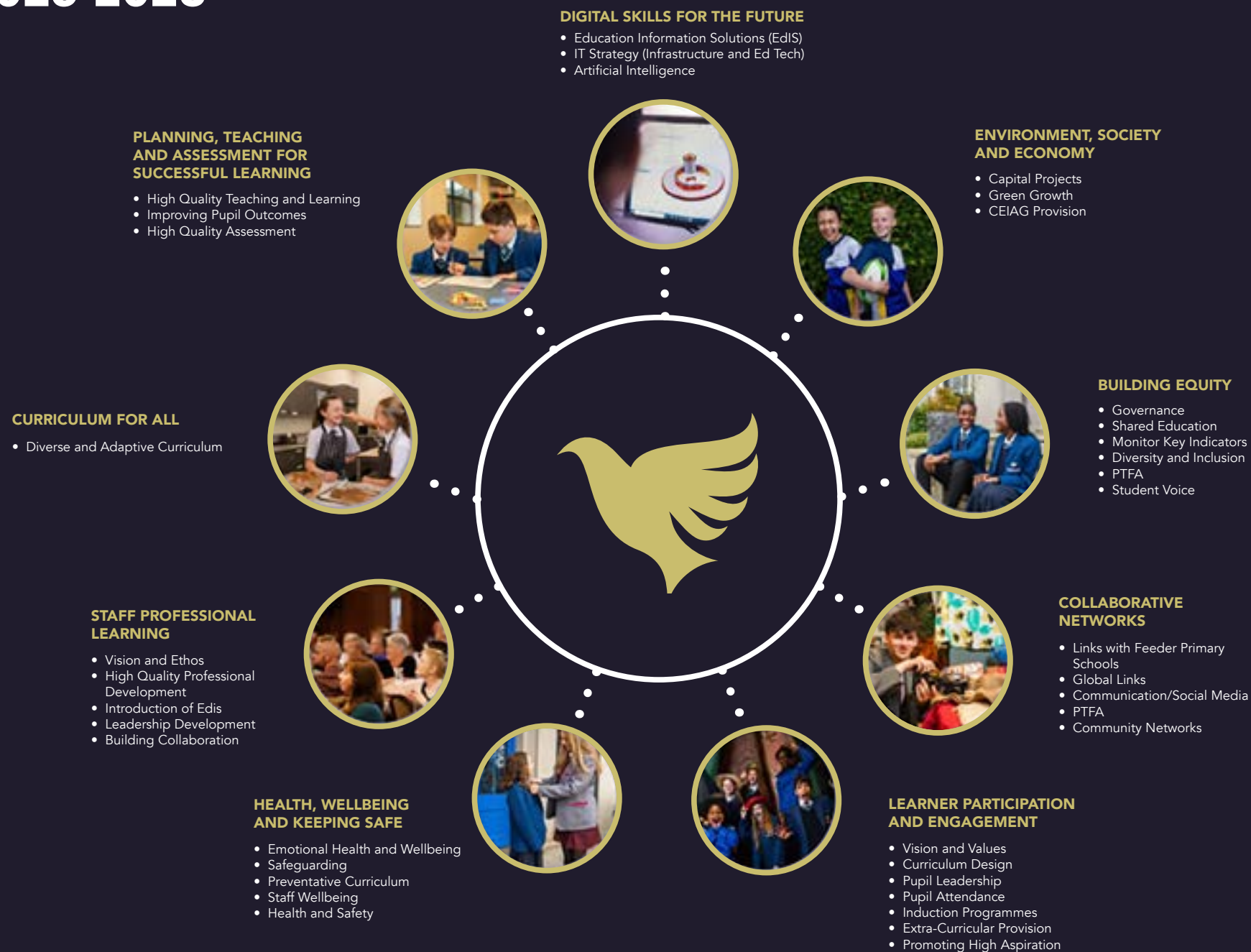


## YEAR 14 DESTINATIONS





# SCHOOL DEVELOPMENT PLAN 2025-2028









**HAZELWOOD**  
INTEGRATED COLLEGE

028 9077 4202 | [info@hazelwood.belfast.ni.sch.uk](mailto:info@hazelwood.belfast.ni.sch.uk)  
[www.hazelwoodcollege.co.uk](http://www.hazelwoodcollege.co.uk)

